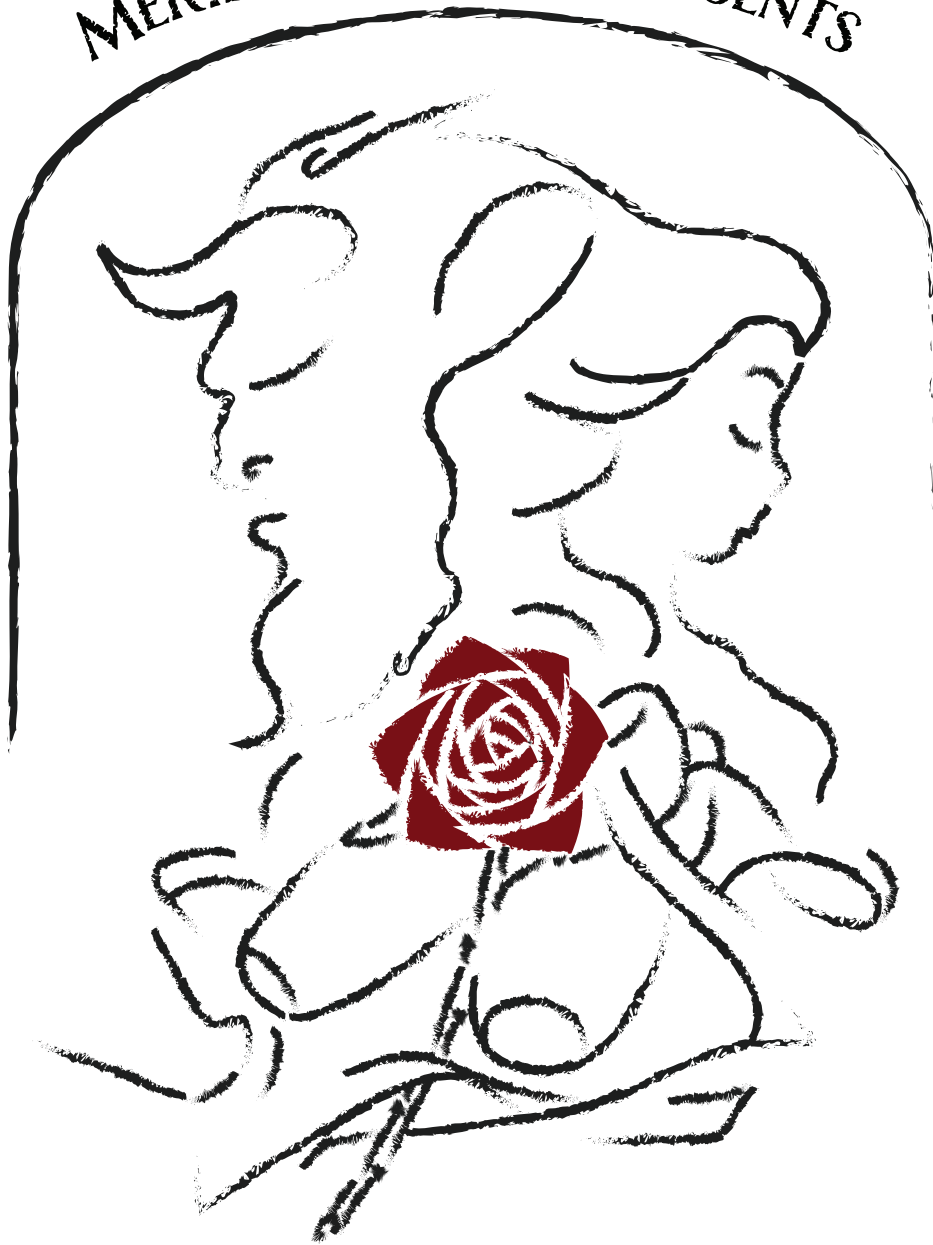


MERIDIAN BALLET PRESENTS



BEAUTY AND
THE BEAST

MCCAIN THEATER

SATURDAY MAY 16TH 6:00

SUNDAY MAY 17TH 1:30

PRODUCED BY JUSTINE WARD-HOOK

BEAUTY AND THE BEAST

← PROLOGUE →

Once Upon a time, in the hidden heart of France, a handsome young Prince Adam lived in a beautiful castle. Although he had everything his heart desired, the prince was selfish and unkind. He unfairly taxed his people to fill his castle with the most beautiful things, and invited the most beautiful guests to his parties. Then one night while throwing a spectacular ball, dancing and enjoying his evening, an uninvited guest arrives at the castle seeking shelter from the storm. Angered by such an outrageous intrusion, he refuses the woman's request and returns to his friends mocking her appearance. As the party is about to resume, she enters a second time offering the prince a single rose in exchange for shelter and food. Repulsed by her haggard appearance, he turns the woman away again. In the midst of the laughter, she discards her cloak to reveal she is actually an exotically beautiful woman and none other than the enchantress, La Fee Magnifique. Stunned, the onlookers become wary and start to distance themselves, all except Adam who realizes fear for the first time.

The enraged fairy tells the prince that his attitude does not match his handsome appearance, and the TRUE beauty is found within. The prince begs for forgiveness, but she refuses saying there is NO love in his heart. To teach him a lesson she casts a spell upon him transforming him into a wild beast and cursing him, his castle, and all who lived there. The curse transforms his servants to become partially human and partially of the castle, and to remain this way until the prince finds love and is loved in return. As days slip into years, the prince and his servants are forgotten by the world, for the wise enchantress had erased all memory of them from the minds of the people they had loved. Yet there was still hope. For the rose the enchantress offered was truly an enchanted rose. If the prince can learn to love another and be loved in return by the time the last petal falls, the spell will be broken. If not, he is doomed to remain a beast for all time, leaving his friends and servants trapped forever as well.

1. Emerald Dancers Eleas Price, Brianna Postles, Rilynn Fortner, Allie Purvis, Josie Shuler, Avery Hook, Sarah Katherine Simmons, Maggie Newlin, June Polson, Ava Matthews (*Emeralds*)
2. The Prince John Mingle (*Prince*)
3. Sapphire Dancers Eden Polson, Maggie McPherson, Mia Ordway, Lincoln Nelson, Ella Kate Gamble, Lilly Nelson, Eleanor Keene, Lyra Zeller, Georgia Brooke Valko, Louise Hannah, Jane Newlin, Kaydence Missler, Maurie Simmons (*Sapphires*)
4. The Prince and his Court John Mingle (*Prince*)
Rani Higgins-Dean, David Odenwelder, Justine Hook, Diante Coker, Brianna Postles, Grayson Blaylock, Allie Purvis
5. The Enchantress Megan Johnston (*Enchantress*) and John Mingle (*Prince*)
6. The Red Rose and the Spell Megan Johnston (*Enchantress*), John Mingle (*Prince*), Allie Purvis (*Rose*), David Odenwelder (*Stem*)

← ACT ONE →

BELLE'S VILLAGE

While the Beast and his servants adjusted to the confines of the castle and the enchanted snowy forest that surrounds it, real life continued for the villagers going about their daily tasks. Belle is a beautiful young girl who's a little different than her friends. She's interested in reading, and dreams of a life greater than what her current life offers. Meanwhile, we meet Gaston, a fierce hunter who prides himself as a ladies' man, and his sidekick, Le Fou. While all the other girls in the village are quite smitten with Gaston, Belle ignores his advances and tends to her father, Maurice, her reading, laundry, and other mundane chores. One particular day, though, things go extremely awry. Belle comes home to find her father leaving for a trip, and soon after she is ambushed by a marriage proposal from Gaston. Within a few hours she receives distressing news of her father's strange encounter with a large forest animal and she sets off to find him. She finds him imprisoned in the dungeon of a castle she had never seen before and offers herself in exchange for her father's release. Without a choice, her father is thrown out of the castle and seeks help from none other than Gaston who only agrees if he can have Belle's hand in marriage. When Maurice cannot retrace his steps back to the castle, Gaston knocks him out and leaves him in the forest. As luck would have it the enchantress, disguised as a gypsy healer, comes to his rescue, restores him to health and agrees to help him find Belle. In the meantime, Lumiere, a servant turned candelabra, visits the dungeon and releases Belle, introducing her to the magic of the castle.

- | | |
|-----------------------------------|---|
| 1. Belle's Village | Rani Higgins-Dean (<i>Belle</i>), Scott Hook (<i>Librarian</i>),
Diante Coker (<i>Baker</i>), David Odenwelder (<i>Gaston</i>),
Grayson Blaylock (<i>Lefu</i>)
Eleas Price, Brianna Postles, Rilynn Fortner, Allie Purvis,
Josie Shuler, Megan Johnston, Justine Hook, Avery Hook,
Sarah Katherine Simmons, Maggie Newlin, June Polson,
Ava Matthews (<i>Villagers</i>) |
| 2. The Bakers | Maggie Newlin and June Polson (<i>Lead Bakers</i>)
Lincoln Nelson (<i>Baker's Assistant</i>)
Lyra Zeller, Georgia Brooke Valko, Kaydence Missler,
Maurie Simmons (<i>Iced Cupcakes</i>) |
| 3. Laundry Maidens | Eleanor Keene, Lily Nelson, Mia Ordway, Avery Hook(Lead),
Maggie McPherson, Jane Newlin, Eden Polson (<i>Laundry Maidens</i>) |
| 4. Belle's Friends | Josie Shuler, Eleas Price, Allie Purvis, Brianna Postles,
Rilynn Fortner |
| 5. Belle and her Dad | Diante Coker (<i>Maurice</i>) and Rani Higgins-Dean (<i>Belle</i>) |
| 6. Librarians | Avery Hook and Ava Matthews |
| 7. Book Club and Librarians | Maria Grant, Brynn Castleberry, Emory Parker, Rowan Winters,
Aurora Miller, Maura Lane Owen, Millie Parker, Mabel Keene |
| 8. Marry Me | David Odenwelder (<i>Gaston</i>) and Rani Higgins-Dean (<i>Belle</i>) |

9. Belle's Dream	Rani Higgins-Dean (<i>Belle</i>)
10. Village Gossips	June Polson (<i>Lead Gossip</i>), Ella Kate Gamble, Louise Hannah, Mia Ordway, Maggie McPherson, Lilly Nelson, Eden Polson, Jane Newlin, Eleanor Keene
11. The Tavern	David Odenwelder (<i>Gaston</i>), Grayson Blaylock (<i>Lefu</i>) Scott Hook (<i>Barkeep</i>), Rilynn Fortner (<i>Bar Maid</i>) Megan Johnston, Josie Shuler, Eleas Price (<i>Triplets</i>)
12. Maurice and the Stargazers	Avery Hook, Ava Matthews, Maggie Newlin, Sarah Katherine Simmons (<i>Stargazers</i>) Diante Coker (<i>Maurice</i>)
13. The White Rose	Josie Shuler (<i>White Rose</i>) Eleas Price and Rilynn Fortner (<i>Enchanted Vines</i>) Diante Coker (<i>Maurice</i>)
14. Beast Attack and Capture	John Mingle (<i>Beast</i>), Diante Coker (<i>Maurice</i>), Rani Higgins-Dean (<i>Belle</i>), Sarah Katherine Simmons (<i>Stargazer</i>)
15. Lumiere to the Rescue	David Odenwelder (<i>Lumiere</i>) and Rani Higgins-Dean (<i>Belle</i>)
16. A New Wardrobe	Justine Hook (<i>Wardrobe</i>), Rani Higgins-Dean (<i>Belle</i>), and Megan Johnston (<i>Mirror</i>)
17. Help to Find Belle	David Odenwelder (<i>Gaston</i>), Grayson Blaylock (<i>Lefu</i>), and Diante Coker (<i>Maurice</i>)
18. The Gypsy	Megan Johnston (<i>Gypsy/Enchantress</i>) and Diante Coker (<i>Maurice</i>)

INTERMISSION (15 MINUTES)

← ACT TWO → THE CASTLE

As Belle is given new clothes and set free to explore the castle, she first encounters the enchanted dining room and quickly joins in the festivities celebrating her arrival. After dinner, however, she is lured away by the tiny rose petals that are hoping to create love between Belle and their prince. This innocent venture takes a frightening turn when the Beast finds Belle in the West Wing having removed a whole row of petals from the rose. Angered, he scares her away and she runs terrified from the castle where she encounters the animals of the Enchanted Forest. The animals try to stop her from leaving, but before they can get her back to the castle the wolves attack. Surprisingly, she is saved by the Beast who is injured in the attack.

Belle helps the Beast back to the castle and they each begin to discover there is something appealing about the other. The servants, turned into household objects, see the glances between them and become hopeful that Belle may be the one to break the spell. As time passes, love grows between the two, but the Beast feels guilty for separating Belle from her father. He offers her a magical mirror that allows her to see her father, but in a terrible turn of events, she sees he's been searching for her and has been injured by Gaston. She doesn't want to leave the Beast, but he insists that she return to her father.

Meanwhile, back in the Tavern, Maurice is tied up for acting crazy when Belle rushes in. Desperate to help her father, she shows Gaston and the villagers her mirror so they can also see the beast. However, they refuse to believe he is gentle and instead set off to "kill the beast". Unfortunately, by the time Belle arrives, Gaston has already mortally injured the Beast. Heartbroken, a solitary tear falls from Belle's eye onto the beast's face signaling the beautiful enchantress to reappear. Seeing their love, she decides to heal the beast and break the spell. A grand wedding follows.....a human wedding!

1. Shake it Up Sarah Katherine Simmons, Avery Hook, Maggie Newlin, Ava Matthews (*Salt and Pepper*)
2. Be Our Guest Josie Shuler, Allie Purvis, Brianna Postles, Rani Higgins- Dean, Rilynn Fortner, Eleas Price, Justine Hook (*Silverware*)
Avery Hook, Maggie Newlin, June Polson, Megan Johnston, Ava Matthews, Sarah Katherine Simmons (*Napkins*)
3. The Rose Petals Mia Ordway and Sarah Katherine Simmons (*Demi- Soloists*)
Parker Gunn, Joanna McElroy, Brooke Hempler, Edie Davis, Olivia Francis, Mia Grace Sevy, Rivers Williams, Camila Hidalgo
4. The West Wing Rani Higgins-Dean (*Belle*), Allie Purvis (*Rose*) and *Rose Petals*, John Mingle (*Beast*)
5. Into the Forest Lyra Zeller, Georgia Brooke Valko, Lincoln Nelson, Kaydence Missler, Maurie Simmons (*Forest Animals*)
Rani Higgins-Dean (*Belle*) and John Mingle (*Beast*)
6. Wolves Allie Purvis, Eleas Price, Diante Coker, Brianna Postles, Rilynn Fortner, Josie Shuler, Maggie Newlin, Ava Matthews, June Polson, Sara Katherine Simmons, Avery Hook (*Wolves*)
Rani Higgins-Dean (*Belle*) and John Mingle (*Beast*)
7. Chip and Saucers Lincoln Nelson (*Chip*)
Louise Hannah and Ella Kate Gamble (*Saucers*)
Rilynn Fortner (*Mrs. Potts*)
Rani Higgins-Dean (*Belle*) and John Mingle (*Beast*)
8. Feather Duster and Dust Bunnies Brianna Postles (*Plumette*), David Odenwelder (*Lumiere*), Maria Grant, Brynn Castleberry, Emory Parker, Rowan Winters, Aurora Miller, Maura Lane Owen, Millie Parker, Mabel Keene (*Dust Bunnies*)

9. Chip and the Tea Set	Ella Kate Gamble, Lincoln Nelson (<i>Chip</i>), Louise Hannah, Rilynn Fortner, Parker Gunn, Joanna McElroy, Brooke Hempler, Edie Davis, Olivia Francis, Mia Grace Sevy, Rivers Williams, Camila Hidalgo
10. Something There	Rani Higgins-Dean (<i>Belle</i>) and John Mingle (<i>Beast</i>)
11. Human Again	Brianna Postles (<i>Plumette</i>), David Odenwelder (<i>Lumiere</i>), Rilynn Fortner (<i>Mrs. Potts</i>), Diante Coker (<i>Cogsworth</i>), Megan Johnston (<i>Mirror</i>), Grayson Blaylock (<i>Coatrack</i>), Lincoln Nelson (<i>Chip</i>) Ella Kate Gamble and Louise Hannah (<i>Saucers</i>)
12. Stained Glass	Eden Polson, Jane Newlin, Louise Hannah, Lilly Nelson, Maggie McPherson, Mia Ordway, Ella Kate Gamble, Eleanor Keene
13. Golden Chandeliers	Allie Purvis, Rilynn Fortner, Josie Shuler, Eleas Price, Brianna Postles
14. Tale as Old as Time	Rani Higgins-Dean (<i>Belle</i>) and John Mingle (<i>Beast</i>)
15. Home to Help	Rani Higgins-Dean (<i>Belle</i>)
16. The Beast Mourns Lost Love	John Mingle (<i>Beast</i>)
17. The Tavern	<i>All Villagers</i>
18. Belle and Maurice	Rani Higgins-Dean (<i>Belle</i>) and Diante Coker (<i>Maurice</i>)
19. Last Dance with the Rose	John Mingle (<i>Beast</i>) and Allie Purvis (<i>Rose</i>)
20. Kill the Beast	David Odenwelder (<i>Gaston</i>) and John Mingle (<i>Beast</i>)
21. The Spell is Broken	Megan Johnston (<i>Enchantress</i>), Rani Higgins-Dean (<i>Belle</i>), and John Mingle (<i>Beast</i>)
22. Wedding Entrance	<i>Meridian Ballet Company Dancers</i>
23. Human Again	<i>Finale all Cast</i>
24. Wedding of Belle and Adam	John Mingle (<i>Prince</i>), Rani Higgins-Dean (<i>Belle</i>), Brianna Postles (<i>Plumette</i>), David Odenwelder (<i>Lumiere</i>), Rilynn Fortner (<i>Mrs. Potts</i>), Diante Coker (<i>Cogsworth</i>), Megan Johnston, and Grayson Blaylock



THE END



← PRODUCTION INFORMATION →

1. Director and Choreographer	Justine Ward-Hook
2. Lighting	AD Bishop
3. Sound	David Bayles
4. Video	Kalob Adair
5. Photography	Nikki Ordway
6. Program	Scott Hook and Jessica Gamble



BEAUTY AND THE BEAST GUEST ARTISTS



JOHN MINGLE

John Mingle is a distinguished principal guest artist and ballet teacher, acclaimed for his dynamic stage presence and more than a decade of professional performances. A Texas native, John began his training at Corpus Christi Ballet under Cristina Stirling Munro and later trained at Dallas Metropolitan Ballet under Ann Etgen and Bill Atkinson. He furthered his studies on scholarship with the San Francisco Ballet School, Pacific Northwest Ballet, American Ballet Theatre, and Ballet Frontier of Texas before earning a Bachelor of Fine Arts in Dance Performance from Southern Methodist University. While at SMU, he was selected to perform Waltz Man in George Balanchine's *Serenade* at the grand opening of the Winspear Opera House.

John's performance career includes 10 seasons with Alabama Ballet, as well as seasons with Cincinnati Ballet and Dayton Ballet and appearances with regional companies across the country. His extensive repertoire spans both classical and contemporary works, with principal roles such as Basilio and Espada in *Don Quixote*, Romeo in *Romeo and Juliet*, Prince Désiré in *The Sleeping Beauty*, Franz in *Coppélia*, the Cavalier in George Balanchine's *The Nutcracker*, Hilarion in *Giselle*, and Von Rothbart in *Swan Lake*. He has also performed lead roles in Balanchine's *Western Symphony*, Christopher Bruce's *Rooster*, and Twyla Tharp's *Nine Sinatra Songs*, and has collaborated with acclaimed choreographers including Jessica Lang, Amy Seiwert, and Joshua Peugh. His artistry was recognized nationally with a 2019 feature in *Pointe Magazine*.

In addition to performing, John is a sought-after ballet teacher and currently serves on the faculty as an adjunct instructor at Samford University, Birmingham, AL. His students have earned numerous accolades, including winning the 2025 Miss Alabama Pageant and placing as 4th runner-up at Miss America 2025. John is thrilled to return to Meridian Ballet for another wonderful performance in *Beauty and the Beast*.



DAVID ODENWELDER

David Odenwelder, originally from Haverhill, Massachusetts, began his training at The Dance Works and New England Civic Ballet. In 2011, David earned a B.F.A in Ballet Performance from the University of Cincinnati. He has performed and toured with Cincinnati Ballet and Neos Dance Theatre. This is David's 15th season with the Alabama Ballet. Some of his favorite roles have included the Roper in Agnes De Mille's Rodeo, Painted Black in Christopher Bruce's Rooster, Cavalier in George Balanchine's The Nutcracker®, Blue Bird in Sleeping Beauty, Gurn in La Sylphide and Bossa Nova in Blue Suede Shoes. He has also been seen in Twyla Tharp's In the Upper Room, Jiri Kylián's Sechs Tänze, Frederick Ashton's Les Patineurs, George Balanchine's Allegro Brillante, and Micheal Fothergill's Chiaroscuro. David is excited to join us again in Beauty and the Beast as one of our distinguished guest artists.



RANI HIGGINS-DEAN

Rani Higgins-Dean is originally from Guntown, Mississippi and continues to live and share her love of dance here in our state. She began her dance training at the age of 3, and transferred to study classical ballet with Justine Hook in New Albany at the age of 8. In 2011 Rani auditioned and became a member of the New Albany Ballet Company where she began dancing principal roles starting with Clara in the Nutcracker and adding many more valuable roles over the years such as: Titania in Mid Summer Night's Dream, Aurora in Sleeping Beauty, Cinderella in Cinderella, The Enchantress in Beauty and the Beast, The Caterpillar in Alice in Wonderland, Glinda in Wizard of Oz, and multiple solo and partnering roles in the Nutcracker over the years. Rani has performed in Meridian in the Nutcracker, Peter Pan, Aladdin, and now Beauty and the Beast.

Rani has also studied with Joffrey Ballet during their summer programs and currently is running her own studio and dancewear shop in Saltillo, Dancing in the Rain. She is married to Bryson Dean.

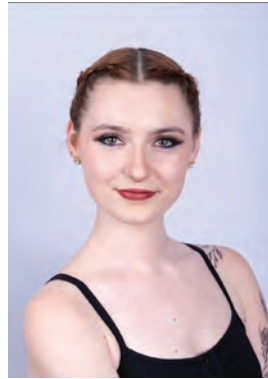
MERIDIAN BALLET STAFF & INVITED DANCERS



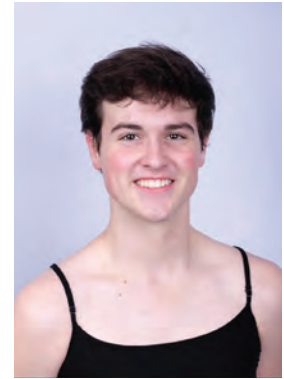
Diante Coker
Teaching Assistant



Brianna Postles
Ballet Mistress



Megan Johnston
Returning Alumna



Grayson Blalock
Invited Special Guest

← THANK YOU TO OUR VOLUNTEERS →

We can't fully express our gratitude and appreciation for all of the parents and community volunteers who make this program a success. Without your willingness to work together as a team the ballet would not be possible. From the bottom of our heart, thank you for your tireless hard work and dedication.



PROUD TO BE THE OFFICIAL SCHOOL OF THE
MERIDIAN BALLET COMPANY

TEACHING BEGINNER THROUGH ADVANCED FOR AGES 3 - ADULT

FOR MORE INFORMATION VISIT US AT:

WWW.MERIDIANBALLET.COM OR CALL 662-266-0500



The MERIDIAN BALLET encompasses
the MERIDIAN SCHOOL OF BALLET and the MERIDIAN BALLET COMPANY.

← ABOUT THE MERIDIAN SCHOOL OF BALLET →

The Meridian School of Ballet provides beginner through advanced instruction to girls and boys ages 3 to adult. Previous students have been invited to dance in Joffrey Summer Intensive programs in New York, Miami and Chicago, the Mississippi School for the Arts in Jackson, Ballet Magnificat, and professionally for the Nashville Ballet. Students are afforded the opportunity to perform in Ballet Company productions.

At the Meridian School of Ballet we recognize classical ballet as a cornerstone of the performing arts that takes a lifetime to master. It is the foundation for modern dance, musical theater, gymnastics, synchronized swimming, figure skating, and more. Ballet is unquestionably an athletic art that requires both a teacher and a coach. So in addition to developing technique, grace and coordination, ballet teaches students how to overcome challenges, push physical limits, sharpen mental focus, build confidence, maintain physical fitness, and foster artistic creativity.

← ABOUT THE MERIDIAN BALLET COMPANY →

The mission of the Meridian Ballet Company is to create a love of classical ballet and provide opportunities for Meridian School of Ballet students to perform regularly. It is a non-profit, youth oriented, pre-professional organization that performs full length ballets featuring guest artists, graduates of the school, and current students. Positions in Company productions are awarded through an audition process, and all students of the School are afforded an opportunity to dance in lead, supporting, or ensemble roles as determined by the director and guest artists.

Our guest artists travel from professional companies such as the Alabama Ballet, Indianapolis Ballet, and Nashville Ballet. The Company's strong relationships with professional dancers provide an avenue for our young dance force to perform at the highest level in full length pre-professional ballets.

Before moving to Meridian, the Ballet Company flourished as the New Albany Ballet Company from 2011 to 2022. Since its inception the company has staged full length performances of "The Nutcracker", "Cinderella", "Sleeping Beauty", "Wizard of Oz", "Mid Summer Night's Dream", "Alice in Winter Wonderland", "A Cinderella Christmas", "Peter Pan", "Beauty and the Beast", "Aladdin", and "Once Upon a Time". We are excited to create and produce new ballets in Meridian for years to come.

The Company operates independently from the Meridian School of Ballet, and relies solely upon the funding generosity of area businesses, performance tickets, boutique sales and small grants. Please consider supporting the company with a donation and receive an ad in our program.

Mailing address:
Meridian Ballet 419 46th Ct.
Meridian MS 39305

www.MeridianBallet.com



ABOUT OUR DIRECTOR



JUSTINE WARD HOOK

Justine Ward Hook, a native of New Albany, serves as director of the company. She received her early ballet training with Sharon Long and danced with the Tupelo Ballet Company for 9 years where she also began her teaching career. She spent two sessions with Ballet Magnificat and performed with Ballet Mississippi. After participating in multiple full length ballets as a dancer, she discovered a passion for directing and staging ballets for the local community to foster a love for dance.

During her ballet career she has danced and studied extensively with professional companies and world renowned teachers such as, Anne Burton Avery (Atlanta Ballet), Linda Divin and Steven Mills (Ballet Austin), Finis Young (Joffrey Ballet), David Howard (Royal Ballet), Mia Michaels (“So You Think You Can Dance”), and Bob Rizzo. She continues to travel for conferences and workshops to bring new ideas back to her dancers, and instill in them a love of classical ballet and an appreciation for the arts.

Mrs. Hook has also coached flag, rifle, and majorette lines, and show choirs throughout north Mississippi. She has also choreographed multiple musicals and plays for schools and community theatre groups.

Justine is married to Scott, and they have 5 children: Kai, Layla, Jon, Avery, and Aiden.

“I’m so excited that you and your children have chosen to grow with us! It has been an extreme privilege to work with all of these students this performance season. We hope you enjoy “Beauty and the Beast” with all of our talented students and guest artists.”

- Ms. Justine

← MERIDIAN BALLET BOARD OF DIRECTORS →

President - Justine Hook

Board Member - Courtney Grant

Vice President - Allison Doyle

Board Member- Hillary Meyers

Secretary - Courtney Sullivan

Board Member - Kasey Owen

Marketing & Promotions - Jessica Gamble



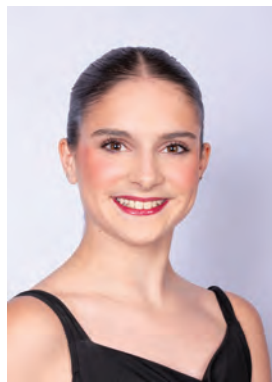
BALLET COMPANY



SENIOR COMPANY MEMBERS



Rilyn Fortner
Graduating Senior



Allie Purvis

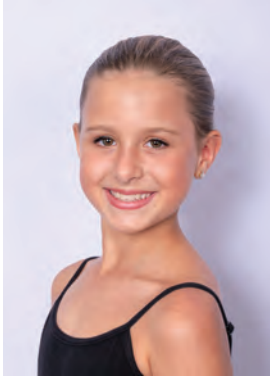


Eleas Price

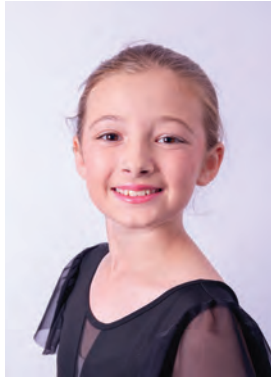


Josie Shuler

← SENIOR APPRENTICE MEMBERS →



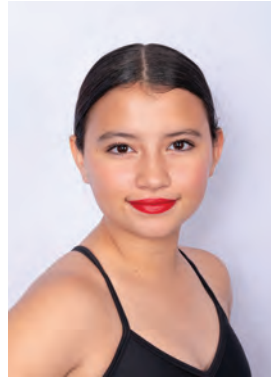
Avery Hook



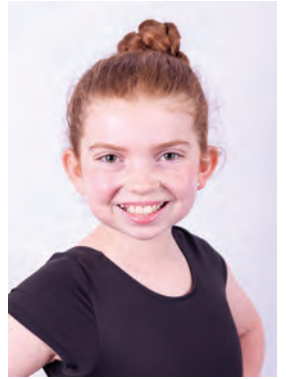
Ava Matthews



Maggie Newlin



June Polson



Sarah Katherine
Simmons

← JUNIOR COMPANY MEMBERS →



Ella Kate Gamble



Eleanor Keene



Louise Hannah



Maggie McPherson



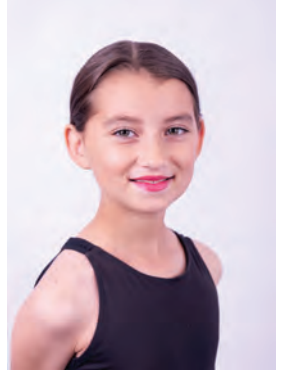
Lilly Nelson



Jane Newlin



Mia Ordway



Eden Polson

← JUNIOR APPRENTICE MEMBERS →

Kaydence Missler

Lincoln Nelson

Maurie Simmons

Georgia Brooke Valko

Lyra Zeller



THANK YOU TO OUR 2026 SPONSORS



PRIMA BALLERINA LEVEL

Anonymous Donor

ECH Healthnet

Meridian School of Ballet

Meridian Community College

GOLDEN BALLERINA LEVEL

Bonita Properties

Structural Steel Services, Inc.

Mr. and Mrs. Charlie Ward

The Weir Group

CENTER STAGE LEVEL

Dermatology and Skin Cancer Center

Pigford and Corey

Hannah Grace Photography

Scotty Ray Report

Mr. and Mrs. Billy Jones

Threefoot Brewing Company

Nikki Ordway Photography

The UPS Store

PIROUETTE LINE

Douglas and Katie Coleman

Mugshots

Dominos Pizza

Mr. and Mrs. Derek Nelson

EM Dancewear

Mr. and Mrs. Ken Nelson

Jean's Restaurant

Courtney Sullivan

May Quick Lube and Alignment

FRIENDS OF THE BALLET

Baskin Robbins

Magnolia Soap and Bath

Chick-Fil-A

Jersey Mikes

Jane Collins

Mr. and Mrs. Adam McPherson

Mr. and Mrs. Michael Davis

Suzy Nelson

Exquisite Nail Salon

Mr. and Mrs. Scott Newell

Mr. and Mrs. Tray Gamble

Marcia Nicholson

Dr. Courtney and Mr. Kristopher Grant

Rosanne Nunnery PhD LPC-S

Mr. and Mrs. Gerald Hannah

Over the Moon

Heritage Building

Mr. and Mrs. Chris Polson

Hickory Pick'N

Mr. and Mrs. Dustin Simmons

Mr. and Mrs. Cesar Hidalgo

Threefoot Blooms

Hodge Orthodontics

WDW Getaways

Janet Jameson

Weidmann's

ec HealthNet

Family Medicine Residency
Powered by Ochsner

ec HealthNet Family Medicine Residency Program

2025-2026 RESIDENTS

Chief Resident
Stacey Rhodes, MD

PGY-1

 James Avance, MD	 Garrett Black, MD	 George Daniel, MD	 Jaime Llovet, MD	 Jacqueline Maxwell, DO	 Naiya Patel, MD
---	--	--	---	--	--

PGY-2

 Onaola Adedeji, MD	 Ravi Lanichhane, MD	 Peter Nwankwo, MD	 Dennis Sanders, MD	 Caleb Schedule, DO	 Shanique Scott, MD
---	--	--	---	--	---

PGY-3

 Smriti Lamsal, MD	 Brandon Coats, MD	 Crystal Ibetoh, MD	 Shelby White, MD	 Syeda Shahid, MD	 Diego Wolff, MD
--	--	---	---	--	--

Dr. Doyle & EC HealthNet Are Proud To Support The Meridian Ballet!



MERIDIAN
COMMUNITY COLLEGE

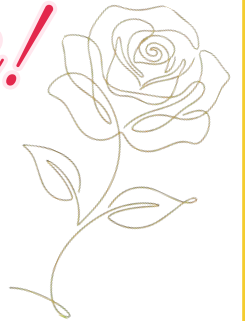
Thank You...
TO MERIDIAN COMMUNITY
COLLEGE, FOR SUPPORTING THE
MERIDIAN BALLET, & YOUTH FINE
ARTS PROGRAMS IN OUR
COMMUNITY!





STRUCTURAL STEEL SERVICES, INC.

*Good Luck,
Josie!*



MUGSHOTS

Grill & Bar

Mugshots of Meridian Is Proud To
Support The Meridian Ballet &
Youth Arts Programs In Our
Community

*Congratulations,
Ella Kate!*





Maggie

Jane

And we know that all things
work together for good to them that
love God, to them who are
called according to his purpose.

Romans 8:28



PIGFORD & COREY
REALTORS IS PROUD TO
SUPPORT THE MERIDIAN
BALLET.

*Good Luck,
SK and BCB!*



Thank You...
To The UPS Store
Of Meridian, MS
For Supporting
The Meridian
Ballet!





BONITA

PROPERTIES, INC

BONITA PROPERTIES
PROUDLY SUPPORTS
THE MERIDIAN
BALLET!

Brawi Tutti!!



*The Meridian Ballet is proud to be the official school of
The Meridian Ballet Company*




nikki ordway
PHOTOGRAPHY



Mia Ordway

WE ARE SO PROUD OF YOU AND ANOTHER BEAUTIFUL
BALLET SEASON. WE LOVE WATCHING YOU SHINE!!
♥ MOM, DAD & MASON



PROCEED & BE BOLD
**THREEFOOT
BREWING**

Proud To Support The Arts In Meridian



"How beautiful on the mountains are
the feet of those who bring good new..."

HANNAH
grace
PHOTOGRAPHY



We love you, Eleanor & Mabel!
-Mama, Daddy, KiKi, Bea, Granny, & Papaw

We love you,
Georgia Brooke!

Love, EE &
Scotty



SCOTTY RAY
REPORT



AMERICAN
MERIDIAN
Jean's Proud To
MISS Support The
EATERY Arts in Meridian

Dermatology & Skin Cancer Center, PLLC

| Dr. Katy Matthews
| Dr. Mark Elliott
| Karli Watkins PA-C

Call 601-512-0431

Now Accepting New Patients, Call Today
For An Appointment!

AVA
Matthews

Congrats!



Proud
Supporter of
The
Meridian
Ballet



JEREMY WILLIAMS / ROY MAY

MAY QUICK LUBE & ALIGNMENT

OFFICE: 601-683-3486
CELL: 601-479-9210

8758 Eastside Dr. Ext. Newton MS 39345 / Exit 109 - Highway 15 N.

Congratulations Eleas!



Proud To Support
The Arts In Meridian

Bring this ad by to receive 10% off your next purchase of \$50 or more!

CAPEZIOX

BLOCH



EM



EUROTARD
DANCEWEAR

EM DANCEWEAR

DAROCH

energetiks

d DANZNMOTION

EM DANCEWEAR & PRINCESS PALACE

2440 North Hills St. Meridian, MS 39305

Bring this ad by to receive 10% off your next purchase of \$50 or more!

EXQUISITE NAIL SALON
Appointment and walk in welcome

6012825402

Monday-Friday 9:00-6:30
Saturday- 9:00-3:00

4833 Hwy 39 North
Meridian, Ms 39301

WEAR

Mining technology for a sustainable future

Proud Sponsor of Meridian Ballet

Supporting Excellence in the Arts
for a Stronger Community



LILLY Nelson

Psalm 149:3

*Let them praise his name with
dancing*

Congratulations Lilly!

We are so proud of you!

Mom, Dad, Kennon & Emery



ALLIE Purvis

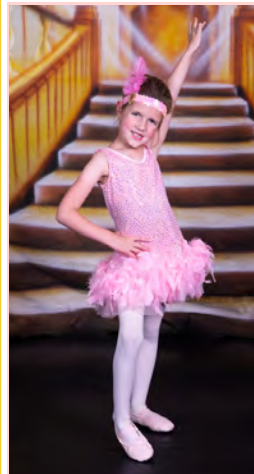
Allie- You are a star and
we are so proud of you!
We love to watch you
dance!

We love you-
Shushy & Poppa



Georgia Brooke
VALKO

Congratulations,
We Love You!



MARIA Grant

To our favorite Dust
Bunny, we are so proud of
you!

Love,
Mommy, Daddy,
Mémé & Poppy

Avery HOOK

Avery, we love you and are so very proud of you!

Remember to dance with your heart & your feet will follow.



*Love,
Mom & Dad*

Rilynn FORTNER



We are so proud of our girl. Always follow your dreams

*Love,
Nanny & Pops*

Maggie & Jane NEWLIN



Break
A
Leg!

*Love,
Mrs. Katie & Mr. Douglas*

MAGGIE

McPherson



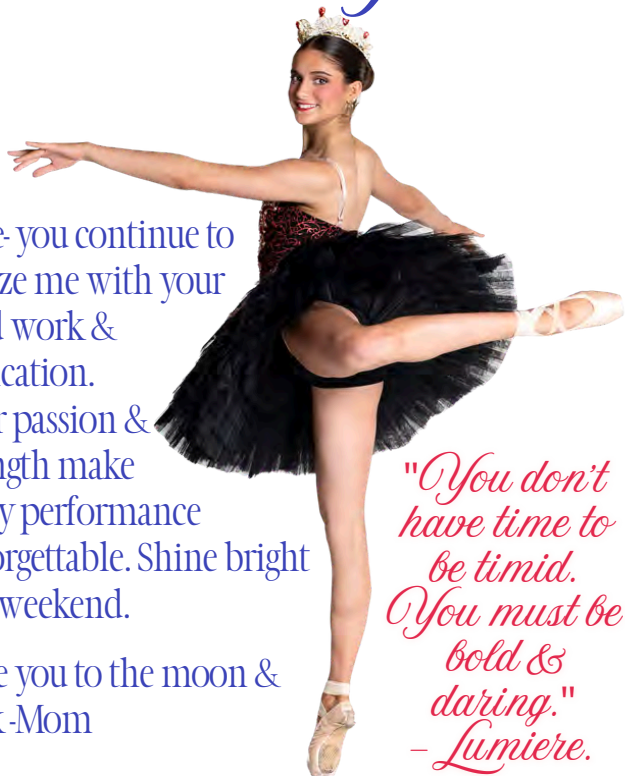
Congratulations on another year of hard work & beautiful dancing!

We are so proud of you!

Love-
Mommy, Daddy,
Riley, Luke & Mary
Alice

ALLIE

Purwis



Allie- you continue to amaze me with your hard work & dedication. Your passion & strength make every performance unforgettable. Shine bright this weekend.

Love you to the moon & back-Mom

*"You don't have time to be timid. You must be bold & daring."
- Lumiere.*

ELLA KATE

Gamble

Such a joy to see our best girl light up the stage! We are so proud of your beauty & grace, inside & out!



*Love-
Mommy, Daddy, Landon, & Micah*

LOUISE

Hannah

We love watching you shine and are so proud of you!

Love,
Mama & Daddy,
Mimi & Bubba,
JJ & Sonny



Sarah Katherine & Maurie
SIMMONS



We are so proud of you!
We love you! Mama & Daddy

Edie Katherine
DAVIS



I am so
proud of
you, Edie!

Love,
Sugar

LINCOLN
Nelson



We love you & are
so proud of your
accomplishments
Lincoln!

June & Eden
POLSON



We love you
& are so
proud of
you both!

Love,
Dad, Mom,
& Isabel

Edie Katherine
DAVIS



We are proud of
your hard work!
Continue leaving a
little sparkle
everywhere you go.

Love-
Dad, Mom, Grace
& Lucas

LINCOLN
Nelson



We are so
proud of all
your hard
work, Lincoln!

We love you -
Pop Pop,
Mimi, &
Grandma!

CAMILLA
Hidalgo



Felicidades Camila! We are so proud
of you! Con amor tu familia!

MAGGIE
McPherson



To Mimmi's best girl, I'm so proud of you
& I know you will shine bright!
Best wishes, Mimmi

FRIENDS

OF THE

Meridian Ballet

Mr. & Mrs. Adam McPherson

Rosanne Nunnery, PhD, LPC-S

psychologytoday.com/us/therapists/rosanne-nunnery-meridian-ms/1658277




BAILEY DIAL
Travel Advisor
601.938.2289
baileyd@wdwgetaways.com
@baileydial
WE DO THE WORLD
WDWGetaways
-Business meeting. Any should meet with Research!




EXQUISITE NAIL SALON
Appointment and walk in welcome
6012825402
Monday-Friday 9:00-6:30
Saturday- 9:00-3:00
4333 Hwy 39 North
Meridian, Ms 39301




Hickory Pick'n
601-357-5053
9560 MS 503
Hickory, MS 39332
*off I20 exit 115
Unique.. Antique.. Boutique..
Eric & Tanya Johannsen
Shelby Harris
www.hickorypickn.com
f i

ec Health+Net

Family Medicine Residency
Powered by Ochsner

Proud to Support The Arts in Meridian!



*Special Thank You to Director, Justine Hook, & The
Meridian Ballet Board of Directors:*

Allison Doyle Courtney Grant Hillary Meyers
Courtney Sullivan Jessica Gamble Kasey Owen